

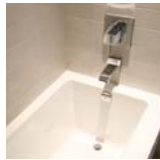
ESPRIT 2

dwell within reach

Luxurious Touches



Solid concrete
Bosa Wall™ exterior
wall construction



Deep soaker tub with
single-lever pressure
balanced shower control



Stylish 30" Samsung or
24" LG bottom-mount
refrigerator**



Smart and functional
home office workspace*



Vanity with framed
mirror and recessed
lighting



Electrolux Icon
natural gas range



Polished chrome
door hardware



Brushed chrome
accessories



Electrolux Icon
integrated electric
wall oven



Natural woodgrain
cabinetry



Designer composite
stone countertops
with polished edging



Stainless steel
combination microwave
and hoodfan



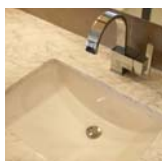
Designer stone
countertops



Natural woodgrain cabinetry
with signature etched-glass
and aluminum door



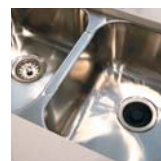
1/3 HP in-sink waste
disposal



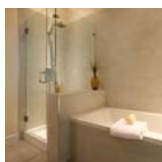
Contemporary square
undermount sink with
polished chrome single-
lever designer faucets



Contemporary halogen track
lighting and glass pendant
lights over breakfast bar



Undermount
stainless steel sink
with polished edging



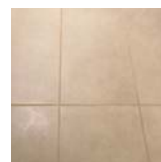
Full-height imported
tile shower and
soaker tub surround



Premium integrated
stainless steel dishwasher



European single-lever
faucet with telescopic
vegetable spray



Imported 18" x 18"
porcelain tile flooring

ESPRIT 2

dwell within reach

A Stylish Impression

- Contemporary architectural styling by Lawrence Doyle Architects
- Solid concrete Bosa Wall™ exterior wall construction
- Large exterior balconies or terraces
- Expansive windows to showcase spectacular views
- Dramatic entry foyer with porcelain flooring

Refined Interiors

- Smart and functional home office workspace*
- Imported 18" x 18" porcelain tiled entries
- Cozy and energy-efficient electric fireplace
- Polished chrome door hardware
- Durable plush carpeting throughout
- Wood door casings and baseboards
- Designer vertical blinds for privacy throughout
- Decora-style rocker light switches
- Full-size stacking laundry centre
- Two contemporary interior design palettes
by Portico Design Group

Lavish Ensuites**

- Natural woodgrain cabinetry
- Designer stone countertops
- Contemporary square undermount sink with polished chrome single-lever designer faucets
- Full-height imported tile shower and soaker tub surround
- Deep soaker tub with single-lever pressure balanced shower control
- Vanity with framed mirror and recessed lighting
- Pull-out storage drawer in vanity in most suites
- Brushed chrome accessories

Smart Main Bathrooms

- Imported ceramic tile surround and showersplash
- High pressure laminate cabinetry in second bathrooms
- Designer stone countertops
- Deep soaker tub with single-lever pressure balanced shower control
- Brushed chrome accessories
- Pull-out storage drawer in vanity

Inspired Kitchens

- Designer composite stone countertops with polished edging
- Natural woodgrain cabinetry with signature etched-glass and aluminum door
- Contemporary halogen track lighting and glass pendant lights over breakfast bar
- Convenient breakfast bar in most homes
- Energy-efficient appliances:
 - ~ Premium integrated stainless steel dishwasher
 - ~ Stylish 30" Samsung or 24" LG bottom-mount refrigerator***
 - ~ Electrolux Icon natural gas range
 - ~ Electrolux Icon integrated electric wall oven
 - ~ Stainless steel combination microwave and hoodfan
 - ~ In-sink waste disposal
- Undermount stainless steel sink with polished edging
- European single-lever faucet with telescopic vegetable spray
- Imported 18" x 18" porcelain tile flooring
- Dramatic easy-care porcelain tile backsplash

Safe, Sound & Energy-efficient

- Protection from the elements with the solid concrete exterior Bosa Wall™
- Fully-secured parking
- Individually secured living floors
- Safety conscious remote parking door opener
- Enterphone outside main lobby with security camera
- Sprinklers in all homes and common areas
- Double glazed, thermally broken aluminum windows
- Central gas-fired hot water system
- Electric baseboard heating throughout with individual thermostat controls
- 10-Year Lombard Structural Warranty plus Two-Year Delivery and Distribution Systems Warranty
- Bosa Properties One-Year In Home Labour and Materials Warranty

Amenities to Soothe Your Soul

- Fully-equipped gym with total fitness station and cardio studio
- Fireside lounge with fully-equipped kitchen and dining area
- Fireside library
- Resident caretaker

*Not included in 03 and 06 suites.

**In 1 bedroom homes, bathrooms finished with ensuite specifications.

***1 bedrooms receive LG refrigerator.